



Nebraska  
Breastfeeding  
Coalition

# November Quarterly Meeting

From the comfort of your own home

*November 2, 2021 – 10am - Noon*

Educate | Advocate | Collaborate

# Agenda

Nebraska  
Breastfeeding  
Coalition



- Welcome & Introductions
  - Your current Leadership Team and New Members
- Financial Update
  - Renewing our Focus
- Strategic Planning Update
- Call to Action
  - Leadership Team Applications
  - Join or Renew NE BFC Membership
- Presentation: Fruit of a Poisonous Tree: A Look at the Historical Roots of Black Maternal Healthcare and Breastfeeding in the US
  - Dr Lynette Cooper

**Educate | Advocate | Collaborate**

Nebraska  
Breastfeeding  
Coalition

# Meet the Leadership Team Members

Educate | Advocate | Collaborate

Nebraska  
Breastfeeding  
Coalition



Stephanie Bradley, CLC  
Touch of Gold- CEO  
Interim Co-Chair



Karina Ruiz-Vargas, CLC  
Spanish Interpreter  
Interim Co-Chair



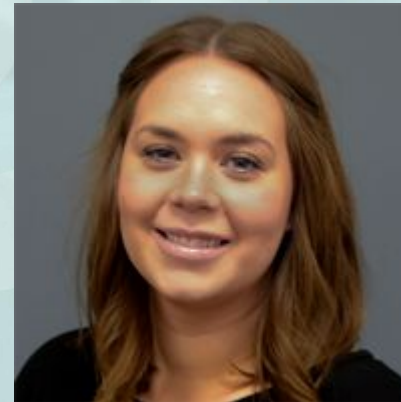
Kailey Snyder, PhD, MS  
Assistant Professor  
Physical Therapy Department  
Creighton University



Jackie Moline, BSN, RN, CLC  
Maternal Infant Program Manager  
Nebraska Department of Health and  
Human Services



Tracy Moore, RN, IBCLC  
Lactation Consultant, OB Nurse  
Navigator, LDRP Nurse  
Methodist Fremont Health



Nicole Osborne, MS  
Training and Staff Development  
Coordinator  
CenterPointe



Kara Foster, MPH  
Education & Training Manager  
CityMatCH

Educate | Advocate | Collaborate

# Welcome Our New Leadership Team Members



Alyson Carter, CLC  
Mental Health Therapist



Nicole Christensen, RD, CLC  
Nebraska WIC Program,  
Department of Health and  
Human Services

Educate | Advocate | Collaborate

# Financial Update

Fiscal Year: July 2021-July 2022

Current Number of Members: 775

Amount spent this fiscal year: \$8308.89

- Primarily on Strategic Planning, promotional materials, and the Administrative Coordinator

Balance as of 10/31: \$32,264.36

Educate | Advocate | Collaborate

# Strategic Planning Update 2021-2024

## - Focus Areas

- Clarifying the mission
- Diversity, equity, and inclusion
- Expanding our outreach and capacity
- Increasing representation
- Intentional advocacy

Inviting membership input during Feb Quarterly Meeting

- If you're interested in joining a workgroup, email [info@nebreastfeeding.org](mailto:info@nebreastfeeding.org)

Educate | Advocate | Collaborate



Nebraska  
Breastfeeding  
Coalition

# Help us make a difference!

Educate | Advocate | Collaborate



Nebraska  
Breastfeeding  
Coalition

# Lead the Charge

**Apply to join our  
Leadership Team!**



Nebraska Breastfeeding Coalition  
Leadership Team Applications



<https://forms.gle/7eUwdU5e2tuehTtL6>

**Educate | Advocate | Collaborate**

# Join Our Mission

**Become a member or renew today!**

[nebreastfeeding.org](http://nebreastfeeding.org)

## **Membership Benefits**

- Regular communication on Nebraska Breastfeeding Coalition Activities
- Use of Coalition materials
- Opportunity to contribute to Coalition activities
- Professional/Networking affiliations
- Opportunities to attend sponsored conferences

**Educate | Advocate | Collaborate**



Nebraska  
Breastfeeding  
Coalition

# Fruit of a Poisonous Tree: A Look at the Historical Roots of Black Maternal Healthcare and Breastfeeding in the US

Educate | Advocate | Collaborate

# Disclosures to Participants

November 2, 2021

Nebraska Department of Health and Human Services

Disclosures to Participants

This nursing continuing professional development activity was approved by the Georgia Nurses Association, an accredited approver by the American Nurses Credentialing Center's Commission on Accreditation.

## 1.5 Contact Hours

To receive Nursing contact hours for this presentation, you must:

- be registered prior to the event,
- attend the entire activity, and
- complete and submit the evaluation survey before **5 pm on November 16, 2021.**

**Educate | Advocate | Collaborate**

# Disclosures to Participants

## Evaluation Link:

<https://www.surveymonkey.com/r/FruitofaPoisonousTree>

Certificates **will not be awarded after November 16, 2021**, and cannot be reproduced or resent at a later date. The link to the evaluation will be provided after the presentation and will not be emailed out. The certificate will be sent to the email used during registration after the evaluation and registration are verified.

This presentation is jointly provided by the Nebraska Department of Health and Human Services and the Nebraska Breastfeeding Coalition. This presentation has no commercial support, and the content of this activity has no connection with any products consumed by or used on patients, so there is no conflict of interest for anyone with the ability to control the content of this activity.

# Dr Lynette Cooper



Lynette Cooper is a Family Nurse Practitioner and Educator with an array of experience caring for patients across the lifespan. She is especially passionate about addressing the effects of health disparities on marginalized communities, in general, and Black women and babies, in particular. Her research interests include implicit bias in healthcare, social determinants of health, and reproductive justice.

**Educate | Advocate | Collaborate**



Nebraska  
Breastfeeding  
Coalition

# 2021-2022 Quarterly Meetings

2021 Meeting Dates

November 2, 2021

2022 Meeting Dates

February 1, 2022

May 3, 2022

August 2, 2022

November 1, 2022

Educate | Advocate | Collaborate



# Nebraska Breastfeeding Coalition

[www.nebreastfeeding.org](http://www.nebreastfeeding.org)