



Nebraska  
Breastfeeding  
Coalition

# May Quarterly Meeting

From the comfort of your own screens

*May 3, 2022 – 10am - Noon*

Educate | Advocate | Collaborate

# Agenda

Nebraska  
Breastfeeding  
Coalition

**10**  
YEARS  
STRONG

- Welcome & Introductions
  - Your current Leadership Team and New Members
- Financial Update
  - Renewing our Focus
- Strategic Plan 2022-2025 Goals
  - Potential activities to look forward to
- Presentation from Nikki & Nikki Lactation Career Consultants
  - “So, you want to be an IBCLC?” (pre-recorded)
  - LIVE! Q&A after the presentation
- Membership / Sponsorship Invitation
- Leadership Team Applications / General Member Involvement

**Educate | Advocate | Collaborate**

Nebraska  
Breastfeeding  
Coalition

# Meet the Leadership Team Members

Educate | Advocate | Collaborate



Nebraska  
Breastfeeding  
Coalition



Stephanie Bradley, CLC  
Touch of Gold- Founder/Director  
Chair



Karina Ruiz-Vargas, CLC  
Spanish Interpreter  
Co-Chair



Kailey Snyder, PhD, MS  
Assistant Professor  
Physical Therapy Department  
Creighton University



Kara Foster, MPH  
Education & Training Manager  
CityMatCH



Alyson Carter, CLC  
Mental Health Therapist



Nicole Christensen, RD, CLC  
Nebraska WIC Program,  
Department of Health and Human  
Services



Johanna Babcock, Breastfeeding  
Peer Counselor (rural NE)

Educate | Advocate | Collaborate

Nebraska  
Breastfeeding  
Coalition



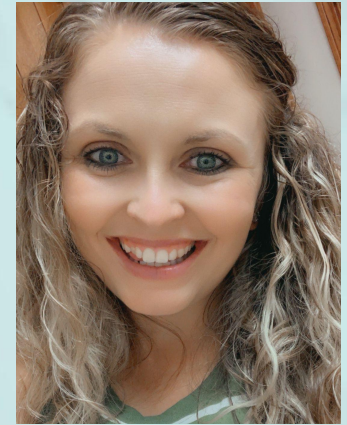
Gaby Valverde, RN, CLC  
Nebraska WIC Program Manager



Molly Rempe, CLC  
OB Coordinator  
Broadstone Memorial Hospital  
Child Passenger Safety Technician



Melanie Horstman, IBCLC  
Child Passenger Safety Technician  
Co-Owner- Nurture Omaha, LLC



Samantha Good, RN, CLC  
Co-instructor in Rural  
Breastfeeding support group.

Educate | Advocate | Collaborate



# Financial Update

**Fiscal Year: July 2021-June 2022**

**Current Number of Members: 92**

- includes company memberships - 5 people maximum per company membership

**Amount of revenue this fiscal year: \$2,225**

- Primarily individual/organizational membership dues

**Amount spent this fiscal year: \$15,375.15**

- Primarily on Strategic Planning, promotional materials, and the Administrative Coordinator

**Balance as of 4/30/22: \$26,648.10**

**Educate | Advocate | Collaborate**

# Strategic Planning Update 2022-2025

## - Focus Areas

- Clarifying the mission
- Diversity, equity, and inclusion
- Expanding our outreach and capacity
- Increasing representation
- Intentional advocacy

If you're interested in joining a workgroup or have ideas on how to advance the mission, email [info@nebreastfeeding.org](mailto:info@nebreastfeeding.org)

Educate | Advocate | Collaborate

# Strategic Plan Primary Goals

## Goal #1

Improve the lactation workforce through diversification and professional support in Nebraska by 2025.

## Goal #2

Increase NE BFC visibility and reach among Nebraska community partners by 2025.

## Goal #3

Increase NE BFC network advocacy efforts by 2025 for relevant policies and practices at the local, State, and National levels that promote breastfeeding in Nebraska.

**Educate | Advocate | Collaborate**



# Complete for LCERPs

To receive LCERPS for this presentation, you must:

- be registered prior to the event,
- attend the entire activity, and
- complete and submit the evaluation survey before **5 pm on May 11th, 2022**

Please put your **first and last name in the chat box** for attendance!

**Evaluation link:** <https://forms.gle/Y84mRj5tXhyUCtDv7>

**Evaluation is required to be completed by people wanting LCERPS.**






**Nikki**  **Nikki**  
LACTATION CAREER CONSULTANTS

Nekisha Killings MPH IBCLC

Nikki Hunter-Greenaway FNP IBCLC



Nebraska  
Breastfeeding  
Coalition

This presentation is sponsored in part by **Touch of Gold** and **Partnership for a Healthy Lincoln**.  
Made possible with funding in part from the **Centers for Disease Control and Prevention**.



**Nikki** **Nikki**  
LACTATION CAREER CONSULTANTS

Nekisha Killings MPH IBCLC  
Nikki Hunter-Greenaway FNP IBCLC



## **Nekisha Killings MPH IBCLC:**

Nekisha Killings is an experienced marketer, writer, equity strategist, and International Board Certified Lactation Consultant (IBCLC). Nekisha found her life's work in lactation support and maternal and child health equity through her personal experiences with birth and breastfeeding. Nekisha contributed the chapter on Cultural Humility in the latest Core Curriculum for Interdisciplinary Lactation Care and is the creator of The Melanated Mammary Atlas. She acts as equity strategist for lactation-related organizations that seek to better reach under-served communities. Nekisha co-founded Nikki & Nikki: Lactation Career Consultants, an organization dedicated to equipping aspirants of color to sit the IBCLC exam.



**Nikki**   **Nikki**  
LACTATION CAREER CONSULTANTS

Nekisha Killings MPH IBCLC

Nikki Hunter-Greenaway FNP IBCLC



## **Nikki Greenaway FNP-C, IBCLC:**

Nikki Greenaway, aka Nurse Nikki, is a wife, mother of three, Board-Certified Family Nurse Practitioner and an International Board Certified Lactation Consultant (IBCLC). Servicing both Louisiana and Texas, Nurse Nikki is the proud owner of Bloom Maternal Health. Bloom provides postpartum and women's health care via house calls and telehealth. She is co-good trouble maker and co-creator of Nikki and Nikki Lactation Career Consultants which assists black lactation specialists navigate the pathways to becoming IBCLCs. All of her endeavors help fulfill her mission to help babies, families and communities, survive, thrive and BLOOM.







Nebraska  
Breastfeeding  
Coalition

# Nikki & Nikki Live Q & A

Use the raised hand icon or type  
your question in the chat

Educate | Advocate | Collaborate

# Resources

- From Nikki and Nikki
  - <https://www.nikkiandnikkiibclc.org/>
- Melanated Mammary Atlas
  - <https://www.mmatlas.com/>
- Blackity Black Lactation Supporter Directory
  -  ADD an entry here: [bit.ly/BLSDAdd](https://bit.ly/BLSDAdd)
  -  VIEW the Directory here: [bit.ly/BLSDir](https://bit.ly/BLSDir)
- The Future of Lactation - peer support for exam prep
  - <https://www.facebook.com/futureoflactation/>
- Lactation Education Resources
  - <https://www.lactationtraining.com/>
- The BLACK Course
  - <https://theblackcourse.com/>
- Postpartum Support International - mental health resource
  - <https://www.postpartum.net/>

## Where to find Nikki and Nikki

### Social Media @NikkiandNikkiIBCLC

- Instagram
- Facebook
- Youtube: Pathway Videos

### Web

[www.NikkiandNikkiINCLC.org](http://www.NikkiandNikkiINCLC.org)

### Email

[Info@NikkiandNikkiIBCLC.org](mailto:Info@NikkiandNikkiIBCLC.org)

Educate | Advocate | Collaborate

# Evaluation

**We want to hear from all of you!**

**Evaluation link:** <https://forms.gle/Y84mRj5tXhyUCtDv7>

**Evaluation is required to be completed by people wanting LCERPS.**

Everyone is welcome to respond with general comments on the event and give feedback for future events.



**Educate | Advocate | Collaborate**



Nebraska  
Breastfeeding  
Coalition

# Help us make a difference!

Educate | Advocate | Collaborate



# Join Our Mission

**Become a member or renew today!**

[nebreastfeeding.org](http://nebreastfeeding.org)

## **Membership Benefits**

- Regular communication on Nebraska Breastfeeding Coalition Activities
- Use of Coalition materials
- Opportunity to contribute to Coalition activities
- Professional/Networking affiliations
- Opportunities to attend sponsored conferences

**Educate | Advocate | Collaborate**

# Invitation to Sponsor the Coalition

Community sponsorship and membership dues allow the Coalition to move strategic planning initiatives forward. If your business or organization would like to become a sponsor, please email [info@nebreastfeeding.org](mailto:info@nebreastfeeding.org) or go to our website to learn more [www.nebreastfeeding.org](http://www.nebreastfeeding.org)

## Sponsoring Member

- Bronze Sponsor
- Silver Sponsor
- Gold Sponsor
- Platinum Sponsor

## Covers 10 individuals

- \$500/year
- \$1000/year
- \$2500/year
- \$5000/year

Provide operational and project funding to advance the Strategic Plan

Recognition at all quarterly meetings, on Social Media and on the NE BFC website homepage

## Membership Criteria

Membership of the Nebraska Breastfeeding Coalition is open to anyone who is in agreement with the mission, goals and values of the Coalition. No person or organization shall be denied membership because of race, gender, religious preference, ethnicity, sexual orientation, age, disability or any other grounds in which it is not permissible to discriminate. Members may not receive personal compensation or commissions from infant formula companies.

**Educate | Advocate | Collaborate**

# Lead the Charge

**Apply to join our  
Leadership Team!**



Nebraska Breastfeeding Coalition  
Leadership Team Applications



<https://forms.gle/7eUwdU5e2tuehTtL6>

**Educate | Advocate | Collaborate**



Nebraska  
Breastfeeding  
Coalition

# Future Quarterly Meetings

2022 Meeting Dates

~~February 1, 2022~~

~~May 3, 2022~~

August 2, 2022

November 1, 2022

Educate | Advocate | Collaborate





# Nebraska Breastfeeding Coalition

[www.nebreastfeeding.org](http://www.nebreastfeeding.org)